



BATHROOM MAKEOVER 1

'THIS SCHEME SUITS EVERYONE'

A fusion of practical elements along with period details gives Sarah Curran's bathroom a timeless look

STYLING TIP

Dark wood-effect tiles are a great solution in a classic-style bathroom as they stay true to the era while being far better suited to a high-moisture environment than real wood

With uneven walls and a sloping floor and ceiling, Sarah Curran's bathroom in her 16th-century converted coach house had many a builder running for the hills, and it took her and husband, Lee Godfrey, 15 years to finally get it refurbished. Meanwhile, they had three or four unsuccessful attempts to find a local company to help them re-plan the space. 'The biggest issue was the sloping floor, which varied by around 10 inches from one side to the other, and no one could come up with a solution to solve it,' Sarah explains. 'It was so bad that the cat could squeeze through the gap under the door. Most builders wanted to raise the floor so you had to step up in to the bathroom, but we were convinced there was another way.'

The house had been badly renovated back in the Eighties and the layout didn't make sense. The basin and WC were positioned under the sloping roof, where there was limited head height, while a small bath and built-in shower cubicle were squeezed along one wall. 'You could just tell it was a rushed job,' says Sarah. 'I knew that if a bath was placed under the slope there would be room for a decent-sized shower, too. I just needed to find someone who shared my vision.'

The turning point for the couple came when they met Martina Landhed from InStil Design, an

← PERFECT POSITION

Having the bath tucked under the sloping ceiling makes best use of the available head-height, while helping to create a more practical room

↓ SIZE MATTERS

Setting the basin on a chrome stand enhances the period scheme, and the visible floor underneath makes the bathroom seem larger than it is



BATHROOM DETAILS

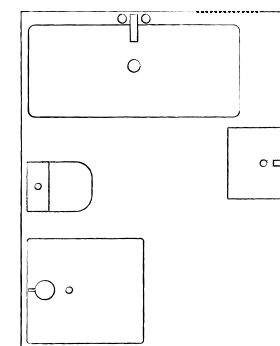
HOMEOWNERS Sarah Curran, who works for a film studio, and her husband Lee Godfrey, who works in IT
AGES 47 and 49
FAMILY Joshua, 20, and John, 15
LOCATION Oxfordshire
PROPERTY Converted coach house dating back to the 16th century

COST OF NEW BATHROOM

Sanitaryware	£1,274
Brassware	£956
Shower	£4,133
Tiles	£1,334
Radiator	£798
Floor	£200
Furniture	£480
Accessories	£458
TOTAL	£9,633

SIZE OF ROOM
W2.68xL3m

→ VIEW THE FLOORPLAN
To the left is a wet room-style shower beside the WC. The bath is opposite the door, under the sloping roof, with the basin on the right



WORK CARRIED OUT

The old suite was removed, the walls and floor levelled and an internal step was built so the door could open inwards. The space was then redesigned with a more user-friendly layout





Oxford-based company, who suggested levelling the floor with a step inside the room so no one would trip up as they entered. 'Nothing fazed her,' says Sarah, 'even the fact that there wasn't one straight wall in the entire space.' As the bathroom would also be used by their two sons, a big walk-in shower was high on their wish list. 'While I wanted to give it an elegant feel, it had to be practical and not too feminine,' she adds.

The idea for the Art Deco scheme was inspired by wall lights the couple saw in InStil's showroom, then Sarah discovered the vibrant green tiles that pulled the look together in Fired Earth. 'They were a little pricey, so we used them just as accent tiles,' she says. 'But the mirror was a bargain find – under £50 from Argos.'

It might have taken more than a decade to get the job done, but Sarah is delighted with the result: 'The men love the power shower and I can lie in the bath looking at the stars. It really couldn't be better.'

↑ SEAMLESS LOOK
Installing a wet room-style floor meant that the shower didn't require a tray, so the floor tiles could be laid continuously

STOCKISTS
Turn to
p181

SHOPPING LIST

SANITARYWARE Enviro double-ended bath, £368; Canova Royal basin with chrome stand, £1,159; Canova Royal back-to-wall WC with soft-close seat, £530; pneumatic concealed dual-flush cistern, £117, all InStil Design **TAPS** Mackintosh chrome three-whole cross tap, £433; Mackintosh deck-mounted bath filler, £523, both InStil Design **SHOWER** Filia XP hinged door with fixed panel, £1,080; Filia XP side panel, £523; Mackintosh concealed thermostatic mixer valve and headset, £1,829; tanking kit and membrane, £436; modular wet floor tapered board and double trap, £265, all InStil Design **RADIATOR** Bard & Brazier La Fayette wall-mounted towel rail, £798, InStil Design **FURNITURE** Shaker wall cabinet, £480, InStil Design **ACCESSORIES** Heart of House Olivia Art Deco wall mirror, £49.99, Argos. Classic opal tubular wall lights, £408 for two, InStil Design **TILES** Grespania brown-plank floor tiles, £200; Crackle wall tiles, £1,155, all InStil Design. Metropolitan Russell Square tiles in green, from £89.76 per sqm, Fired Earth

IDEAS TO STEAL

Adapt Sarah's clever details to make the most of your space



↑ CHOOSE ELEGANT BRASSWARE
Decorative taps and fittings are a key look for an Art Deco-inspired basin



↑ GET CREATIVE WITH LIGHTING
Distinctive, wall-mounted fixtures are an integral part of a period scheme



↑ MAXIMISE YOUR STORAGE
Keep toiletries at hand with tiled, recessed shelves in the shower